



## Cooperative State and Regional Interoperability Partnerships





**U.S. Department of the Interior**

# Radio Interoperability

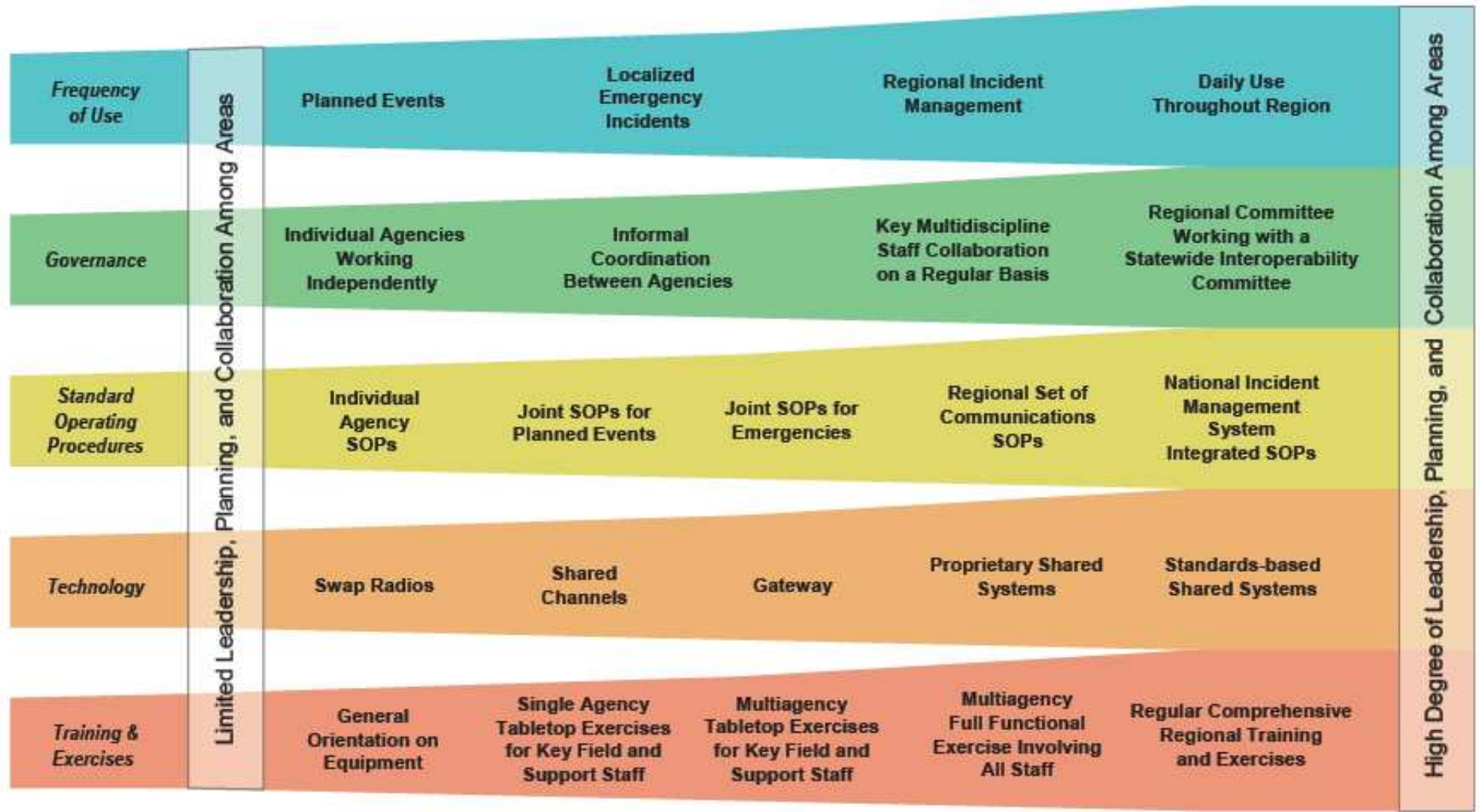
- Put first responders (Fire, Law Enforcement, and Emergency Management) on the same system.
  - Include Federal, State, Local and Tribal.
  - Remove stovepipe systems
  
- Share the use of spectrum and standards based infrastructure.
  - The Federal Government provides the State with access to Federal radio spectrum in return for “free” use of the State Radio network.
  
- Participate in governance at the local level.
  - In some States the federal agencies have been granted a “seat” on the State’s Public Safety Communications Board.



# NTIA Federal Policy Changes

- Championed federal position for inclusion of Shared Federal/Non-Federal Radio Systems Policy in NTIA Manual of Regulations and Procedures for Federal Radio Frequency Management – 8.2.47 of NTIA Manual
- DOI and DHS Appointed co-conveners for Ad Hoc 214 Public Safety Communications
- Interoperability Montana certified for 30 DOI federally managed discrete frequency assignments
- WyoLink certified for 76 DOI, DHS, DOJ and USCG federally managed discrete frequency assignments

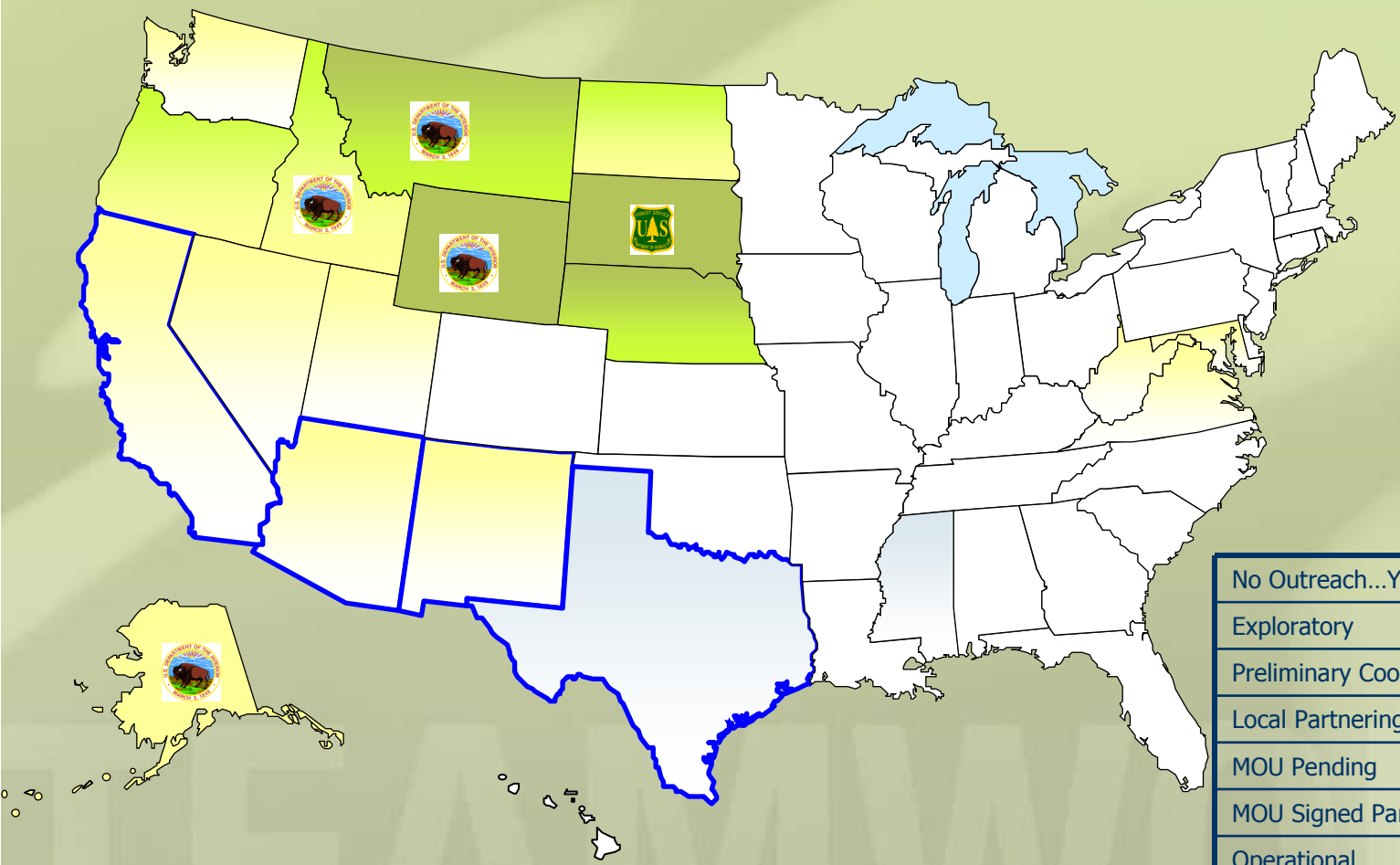
# Communications Interoperability Continuum





**U.S. Department of the Interior**

# Partnership Building



No Outreach...Yet	White
Exploratory	Light Blue
Preliminary Coordination	Yellow
Local Partnering Only	Orange
MOU Pending	Light Green
MOU Signed Partially Operational	Medium Green
Operational	Dark Green

 **USDA Representative to State Governance**

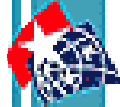
 **DOI Federal Representative to State Governance**



# South Dakota Example

- DOI and USDA provided the state access to 9 discrete VHF frequency assignments for use in their State-Wide Trunk System via a DOI-State MOU
- Bureau of Indian Affairs (BIA) leveraged this agreement and migrated the following agencies to the State System:
  - Cheyenne River, Crow Creek/Lower Brule, Sisseton, Rosebud, Yankton, Whapeton, Standing Rock and Pine Ridge

TEAMWORK



nationalatlas.gov™  
Where We Are

# SOUTH DAKOTA

## FEDERAL LANDS AND INDIAN RESERVATIONS

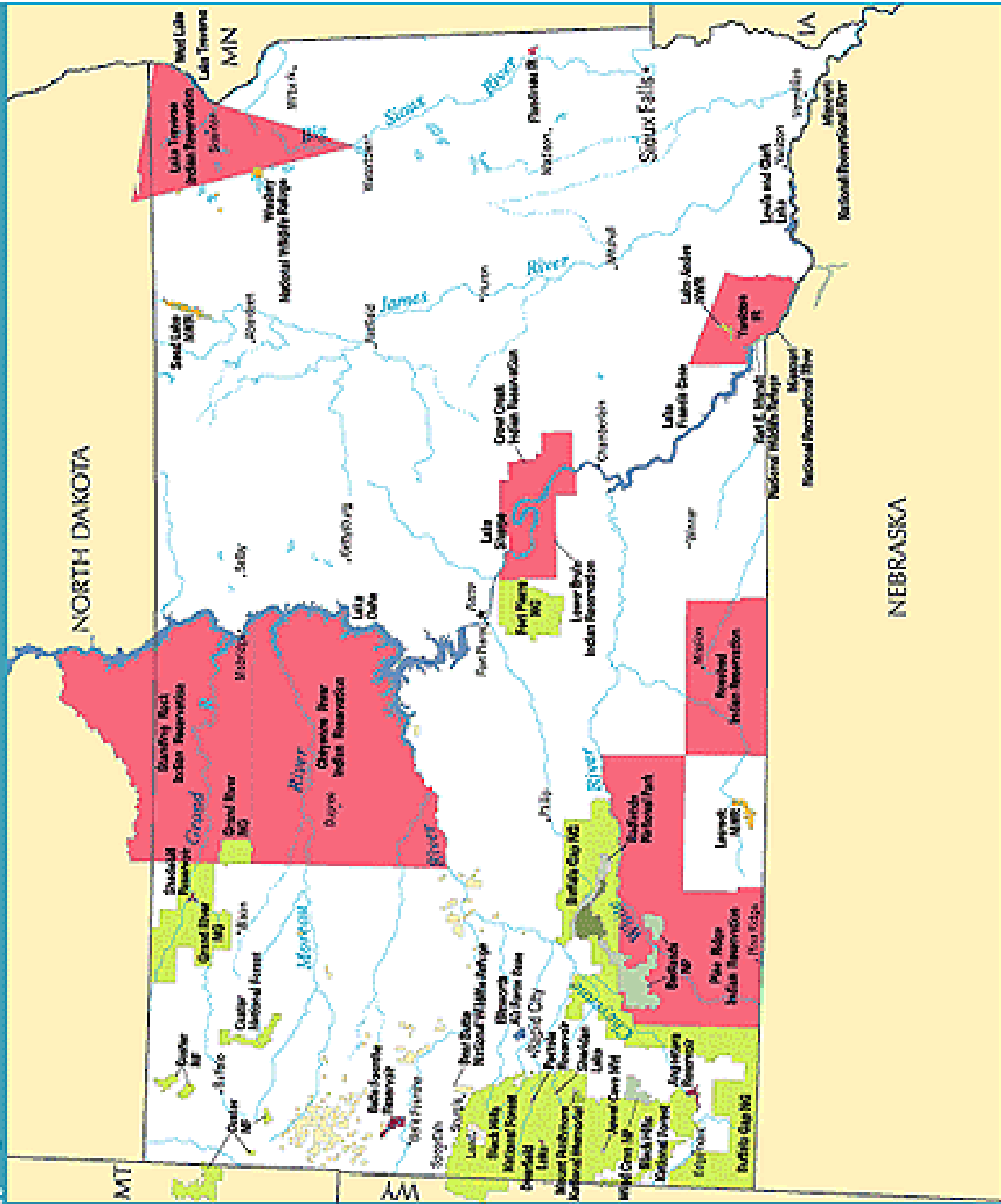
- Bureau of Indian Affairs
- Bureau of Land Management Wilderness
- Bureau of Zoology
- Department of Defense (Excludes Army Corps of Engineers (USACE))
- Fish and Wildlife Service / Wetlands
- Forest Service / Wilderness
- National Park Service / Wilderness

Some small sites are not shown, especially in urban areas.



### Abbreviations

- IB Indian Reservation
- NP National Park
- NG National Grassland
- NM National Monument
- NP National Park
- NRWS National Wildlife Refuge



U.S. Department of the Interior  
U.S. Geological Survey

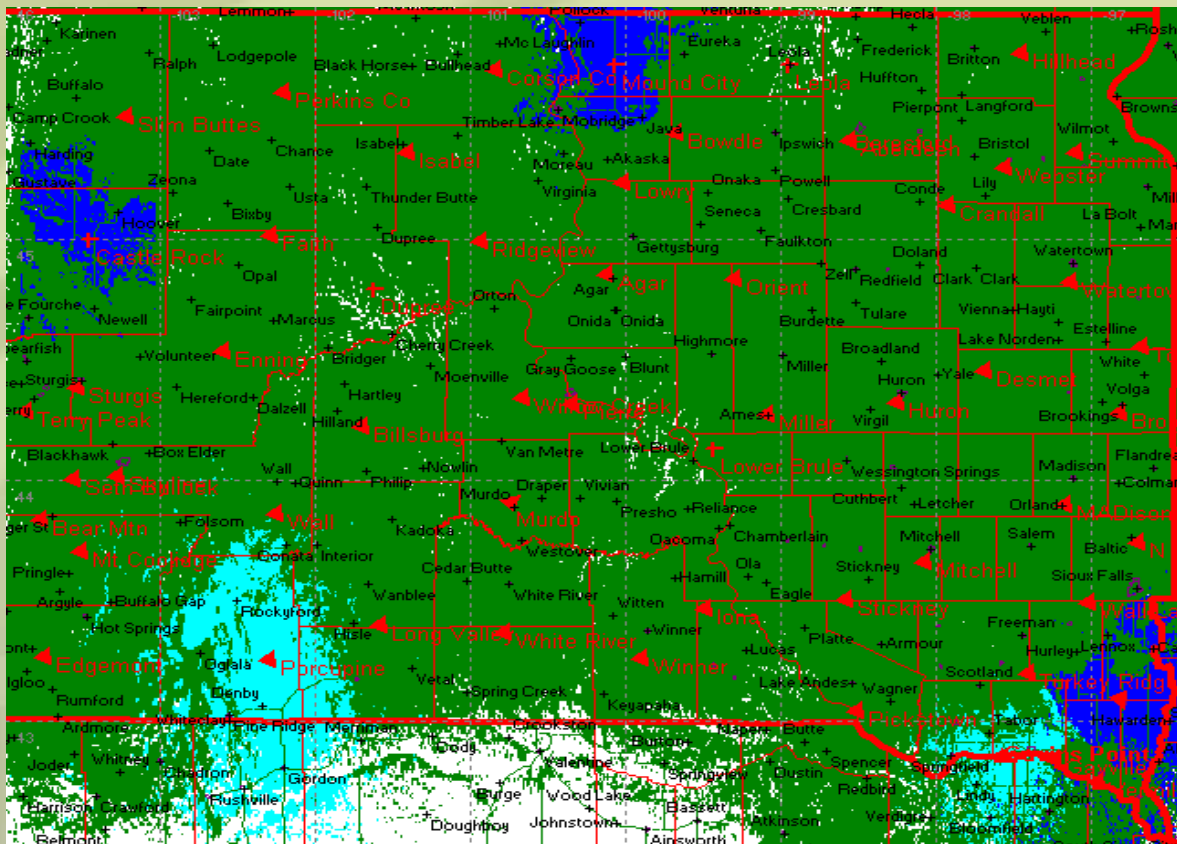
The National Atlas of the United States of America®

U.S. GEOLOGICAL SURVEY, RESTON, VA 2019



# South Dakota Example

## ■ Coverage Map



**Mobile Coverage--  
95+% Geographic  
coverage**

The components of the system are as follows:

51 tower sites located throughout South Dakota + 1 in development (Porcupine).

185 voice repeaters, 51 control channel repeaters( can also be used as voice channel).

1 Network controller located in the Becker-Hansen building in Pierre.

3 State Dispatch centers with a total of 17 console operator positions.



# South Dakota Example

Current South Dakota System records show 13,993 radios that are distributed and are capable of operating on the system, the breakdown is as follows:

- 3,090 state. (22%)
- 9,606 local. (69%)
- 337 federal. (2%)
- 960 BIA & tribal radios. (7%)
- **Breakdown of local mobile radios issued:**
  - 232 Fire Departments.
  - All Ambulance/EMS entities (DOH).
  - 107 Police departments.
  - 65 Sheriff's departments.
  - All Emergency Managers.
  - All emergency care medical facilities (DOH).
- **Current Use (Talkgroup activity)**
  - 67% Local traffic.
  - 5% Tribal/Federal traffic.
  - 28% state agency traffic.
  - Over 2,000,000 calls during the month of August 2007.
  - Total of 1371 talkgroups in the system.
- **Hospital/EMS**
  - SD DOH has been working with health care to properly utilize the radio system.
  - All air ambulance services now have the radios installed.



nationalatlas.gov™  
Where We Are

MONTANA

### FEDERAL LANDS AND INDIAN RESERVATIONS

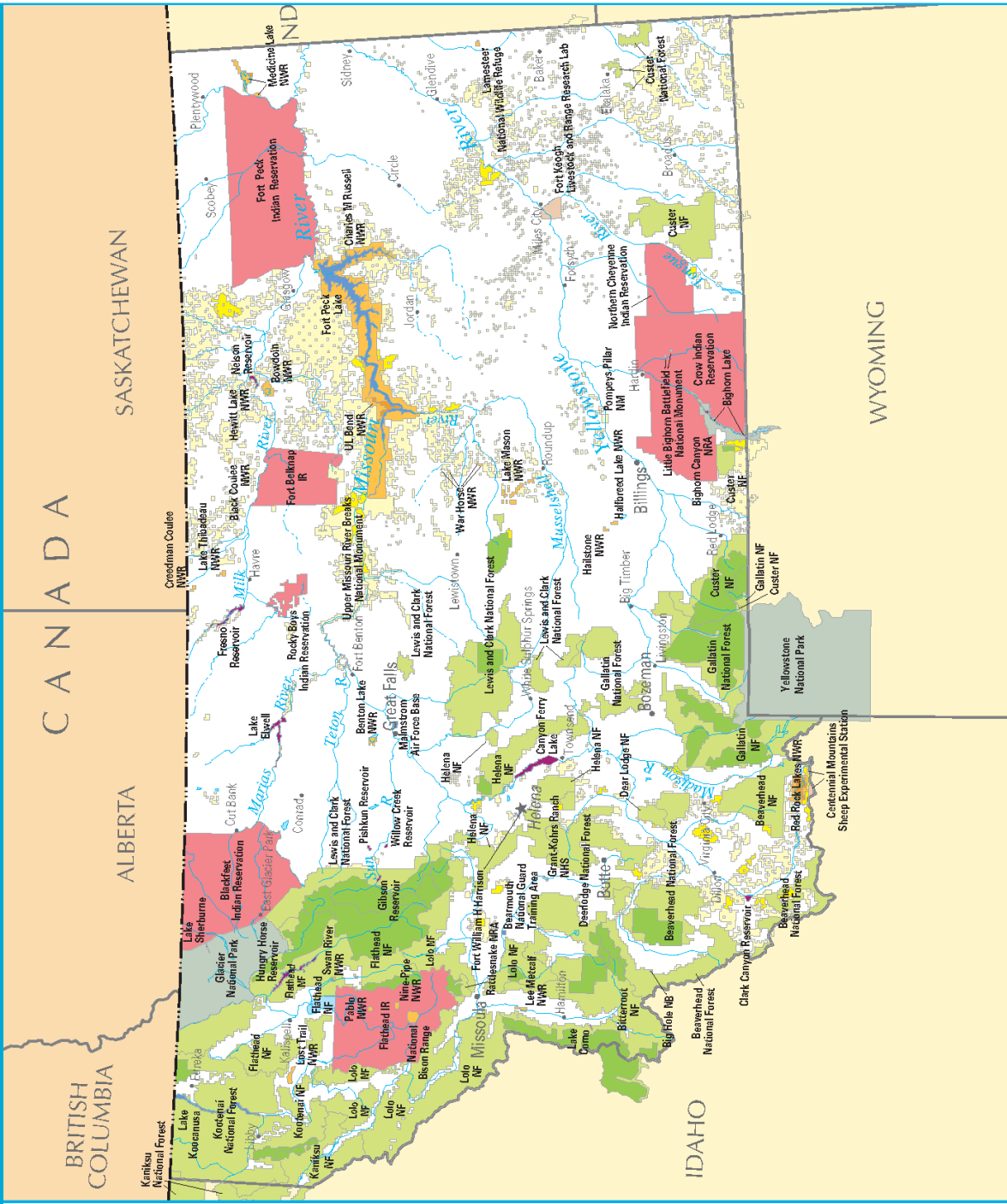
- Bureau of Indian Affairs
- Bureau of Land Management / Wilderness
- Bureau of Reclamation
- Department of Agriculture
- Department of Defense (includes Army Corps of Engineers lakes)
- Fish and Wildlife Service / Wilderness
- Forest Service / Wilderness
- National Park Service / Wilderness

Some small sites are not shown, especially in urban areas.



#### Abbreviations

- IR Indian Reservation
- NB National Battlefield
- NF National Forest
- NHS National Historic Site
- NM National Monument
- NRA National Recreation Area
- NWR National Wildlife Refuge

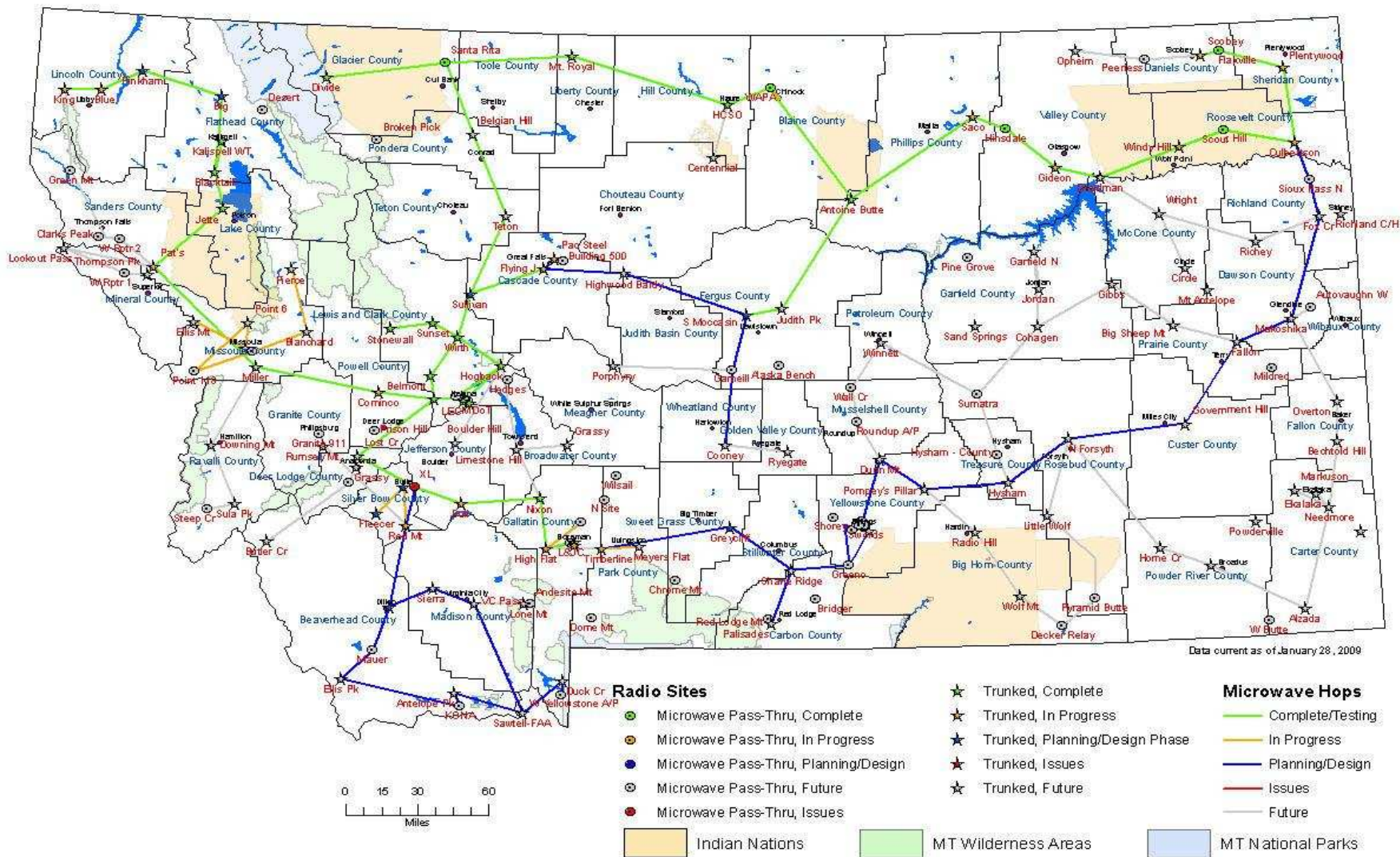


U.S. Department of the Interior  
U.S. Geological Survey

The National Atlas of the United States of America®



# Interoperability Montana





nationalatlas.gov  
Where We Are

WYOMING

### FEDERAL LANDS AND INDIAN RESERVATIONS

- Bureau of Indian Affairs
- Bureau of Land Management / Wilderness
- Bureau of Reclamation
- Department of Defense (Includes Army Corps of Engineers lakes)
- Fish and Wildlife Service / Wilderness
- Forest Service / Wilderness
- National Park Service / Wilderness

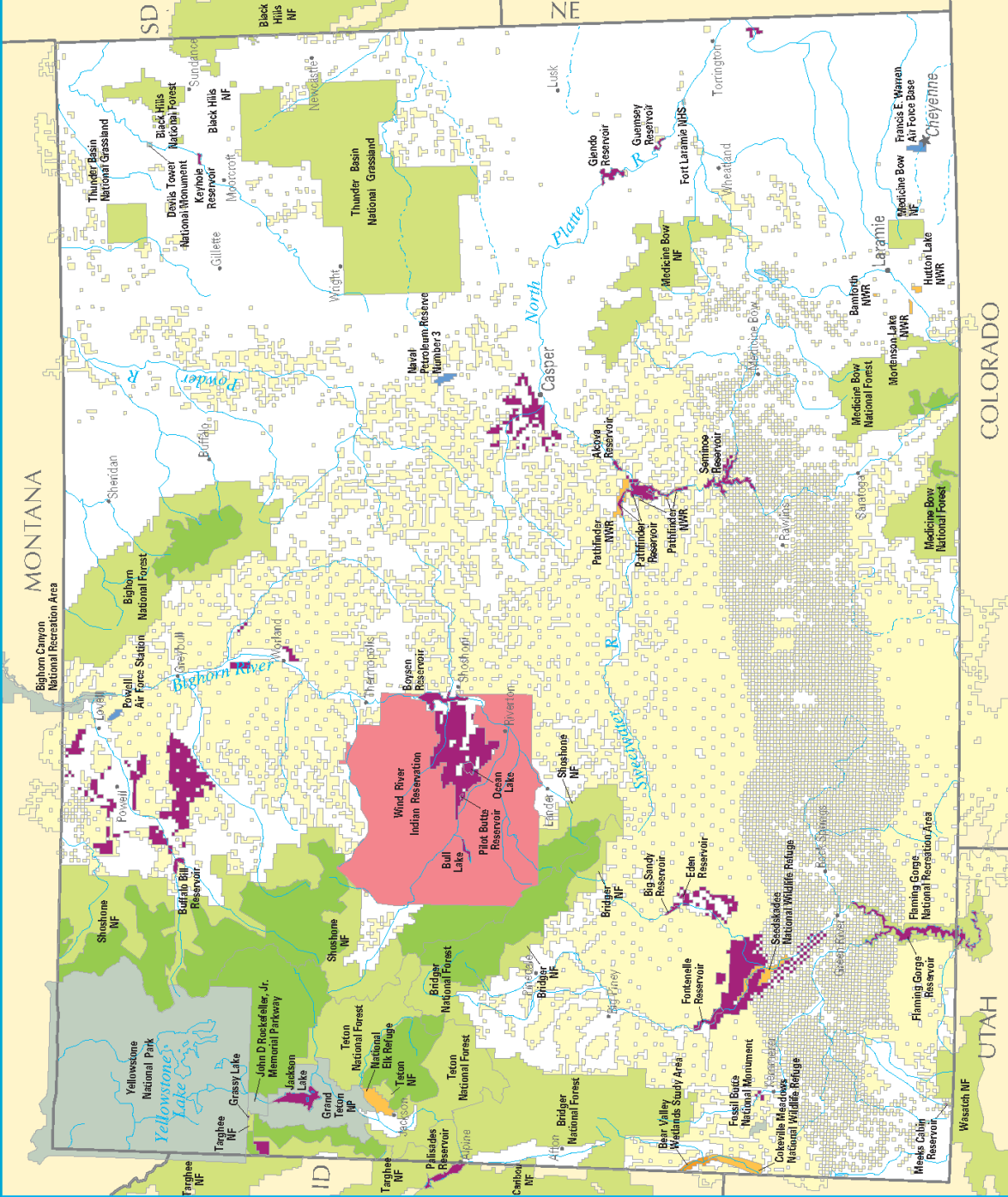
Some small sites are not shown, especially in urban areas.



Albers equal area projection

#### Abbreviations

- NF National Forest
- NHS National Historic Site
- NP National Park
- NWR National Wildlife Refuge



U.S. Department of the Interior  
U.S. Geological Survey

The National Atlas of the United States of America®





**THANK YOU**

TEAMWORK