



# EARTH INTELLIGENCE

Capabilities to help you monitor, understand,  
and navigate our changing planet



# MAXAR





# MAXAR

Maxar is a trusted partner and innovator in Earth Intelligence and Space Infrastructure. We enable commercial businesses and government organizations to understand our changing planet, deliver global broadband communications, and explore space.

Our unique approach combines decades of deep mission understanding and a proven foundation of commercial technology.

Across a variety of markets and more than 50 governments, innovative customers choose Maxar solutions to inform critical decisions, evolve operations, and improve ROI.



# THE MAXAR CONSTELLATION

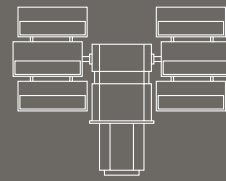
Maxar owns and operates the most sophisticated Earth imaging constellation on orbit, collecting more than three million square kilometers of high-resolution satellite imagery each day.

This daily collection is constantly feeding into our 100+ petabyte image archive, which also contains millions of square kilometers of imagery from our retired satellites—creating a digital time machine that allows customers to analyze in very high resolution change dating back 20 years.

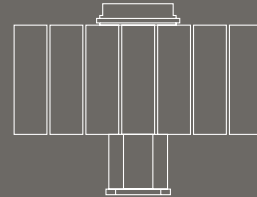
Our next-generation constellation, WorldView Legion, is currently in development and further advances our ability to detect and capture global change.

## FOR A BETTER WORLD

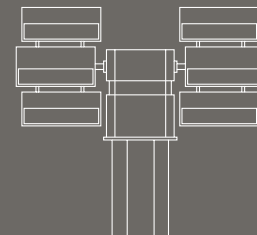
WorldView-1®



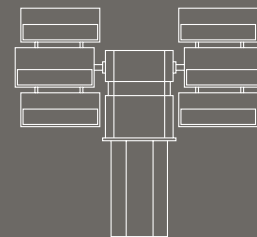
GeoEye-1®



WorldView-2®



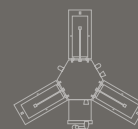
WorldView-3®



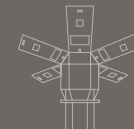
Decommissioned | Imagery available in archive



IKONOS



QuickBird



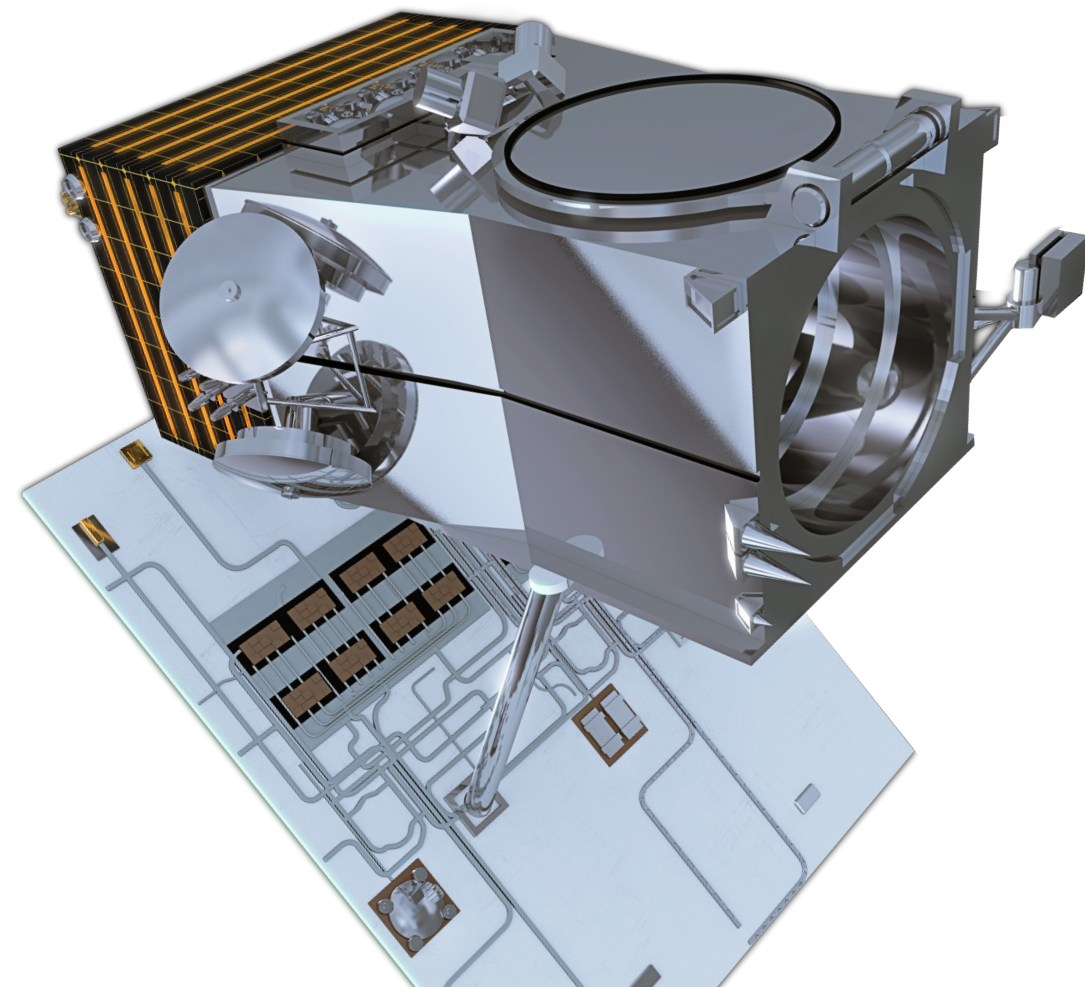
WorldView-4®

# WORLDVIEW LEGION

A new era in Earth imaging and geospatial insights

We're building our next-generation low Earth orbit constellation with the most innovative and flexible imaging satellites for exceptional on-orbit performance, value and reliability.

Launching in early 2021, the WorldView Legion constellation will dramatically expand our ability to revisit the most rapidly changing areas on Earth, enabling up to 15 collections per day, tripling our 30 cm capacity and drastically increasing coverage of high-interest areas.



# PRODUCTS & SERVICES


Maxar develops space infrastructure and ground systems, and provides Earth imagery, data layers, and AI-powered analytics. Our suite of capabilities includes the highest quality data collection, which fuels superior derived information products and analytics powered by AI and geospatial expertise.

## SPACE INFRASTRUCTURE

Satellite platforms and spacecraft



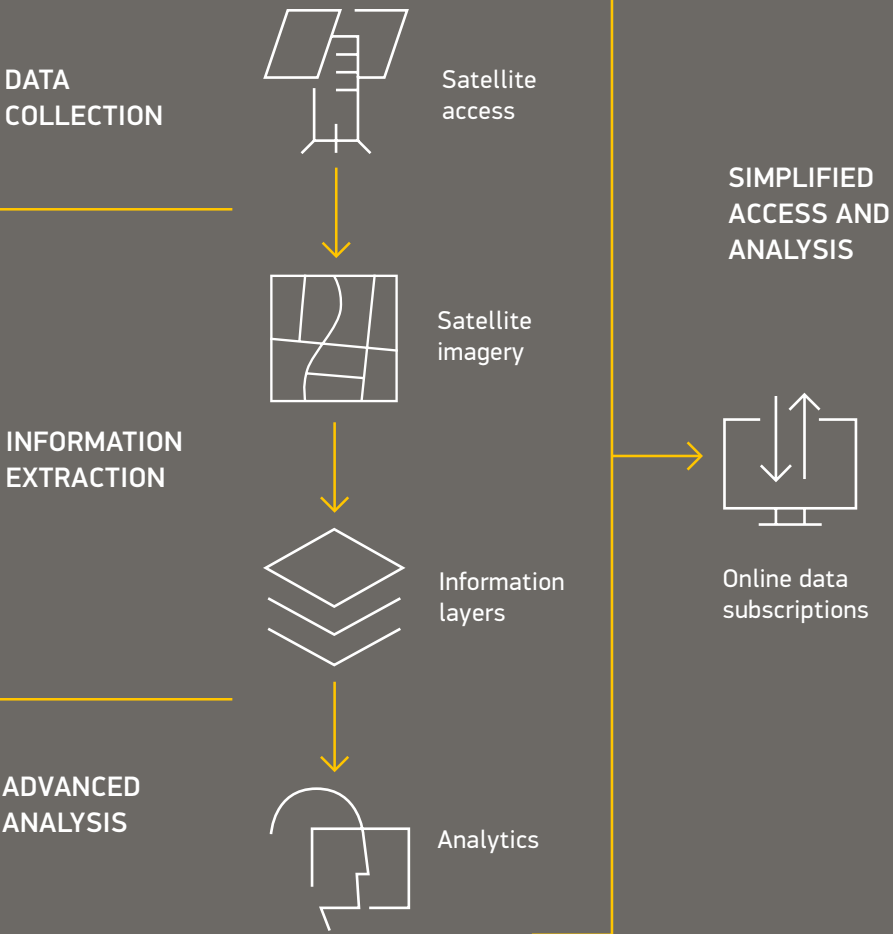
Robotics and servicing



Ground stations



## EARTH INTELLIGENCE



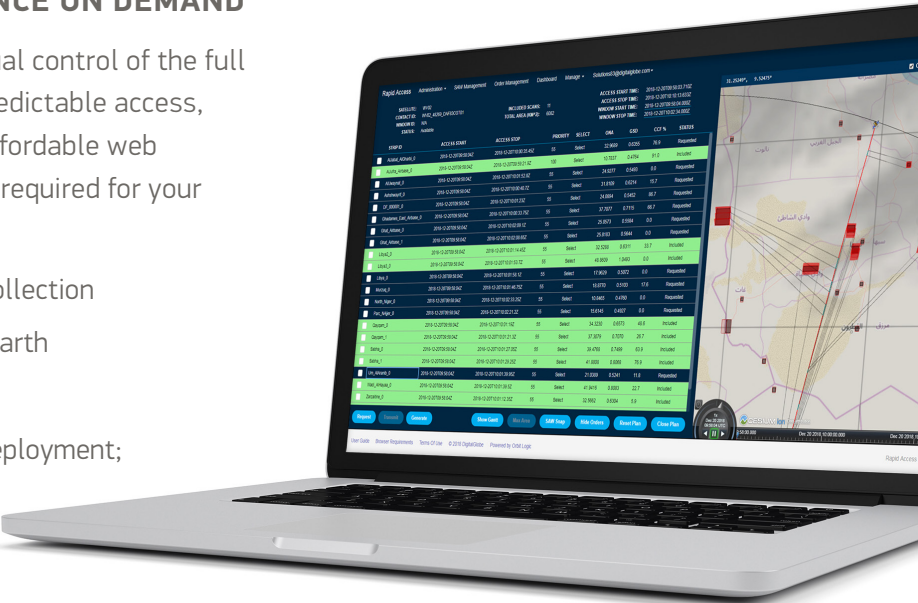
# SATELLITE ACCESS

Take control of your intelligence with direct satellite access opportunities

## RAPID ACCESS PROGRAM | INTELLIGENCE ON DEMAND

Our Rapid Access Program (RAP) gives you virtual control of the full Maxar constellation through priority tasking, predictable access, and imaging operations through a simple and affordable web interface. Focus your investment on the access required for your mission, not the infrastructure.

- Receive processed imagery within 6 hours of collection
- Gain secure, online access from anywhere on Earth
- Choose from point targets to large area scans
- Conserve resources with fast, cost-effective deployment; no infrastructure investments required
- Deploy within a day of contract execution



## DIRECT ACCESS PROGRAM | COMMAND YOUR MISSION

The Direct Access Program (DAP) enables direct satellite tasking using your own ground station for real-time imagery acquisition and downlink to support the most demanding mission requirements.

- Dedicated ground system for fastest, secure throughput
- No preemption—task our constellation on demand and downlink directly for delivery within minutes of collection
- Local control and encrypted downlink to ensure a secure, confidential end-to-end workflow within your defined area of interest
- Flexible licensing terms to satisfy mission and security requirements



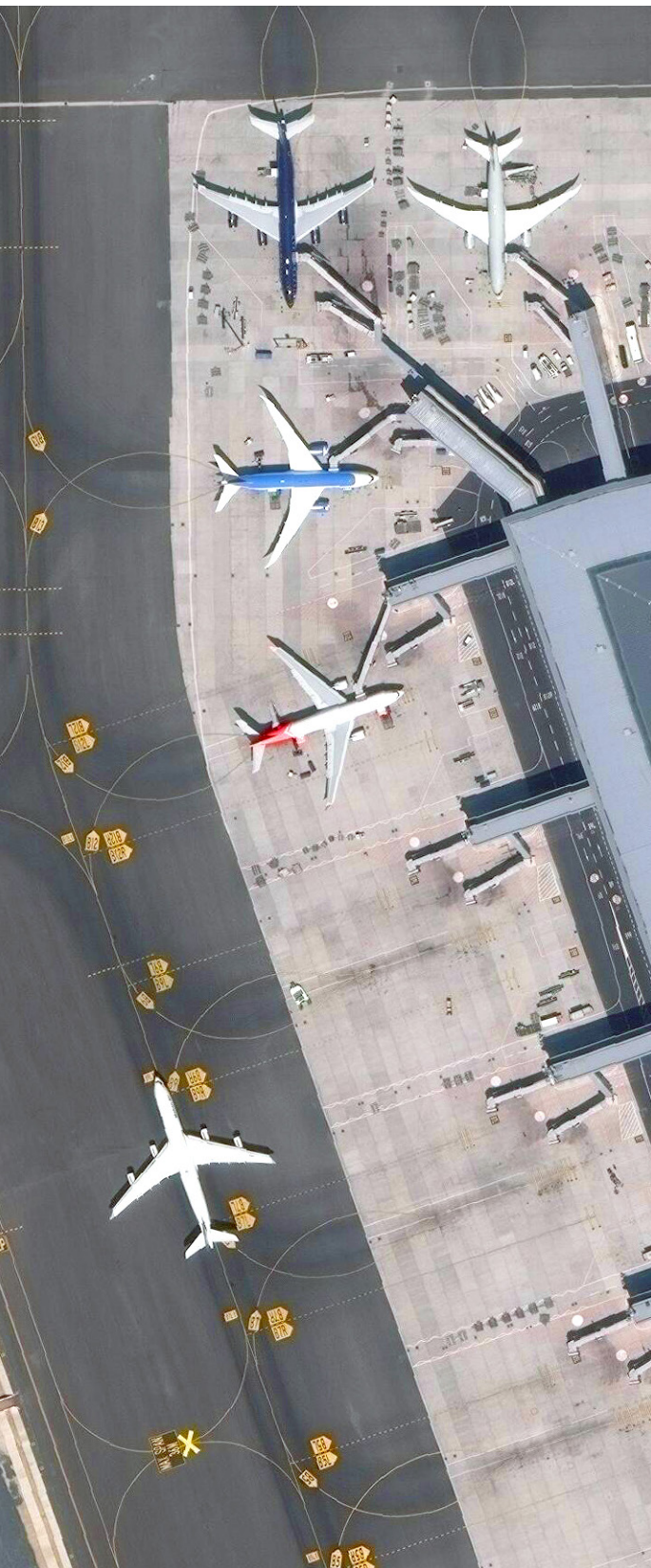
## LEGION X

Maxar offers select strategic partners the opportunity to buy into our next-generation WorldView Legion constellation, securing the highest priority and most access to their region of interest.



# OPTICAL IMAGERY

The highest quality commercial imagery available



## A DIGITAL TIME MACHINE

With the world’s largest, high-resolution image archive, Maxar enables you to gain historical context and analyze change over time on a global scale.

## SUPERIOR QUALITY

- Receive processed imagery within 6 hours of collection.
- Native 30 cm resolution imagery delivers a clearer, richer image that empowers better decision-making through improved situational awareness.
- High accuracy (better than 5 m CE90) ensures content is as closely aligned as possible to known coordinates on the surface of the Earth.
- Multispectral diversity, including panchromatic, natural color, near-infrared and short-wave infrared help you see beyond what’s visible to the naked eye to:
  - Classify vegetation health
  - Identify man-made and natural materials
  - Penetrate smoke
  - Detect fire hot spots
  - Map minerals
- Timely tasking options, designed to help you get the exact image you need when you need it.

# RADAR IMAGERY

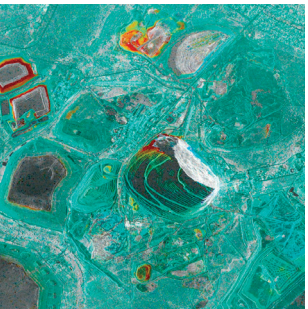
See through cloudy weather  
and at night

RADARSAT-2 offers rapid access to all-weather synthetic aperture radar (SAR) imagery and surveillance information. These unique sensor capabilities provide reliable and continuous monitoring with flexible resolution and coverage combinations for a wide range of civil, commercial, and defense applications.

## RESPONSIVE RADAR

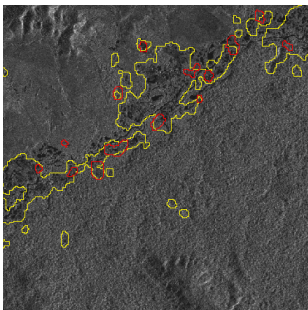
RADARSAT-2’s agile design enables rapid delivery for near real-time geospatial data, offering the highest imaging capacity and the largest global network of ground receiving stations of any commercial synthetic aperture radar (SAR) mission.

RADARSAT-2 is owned and operated by MDA.



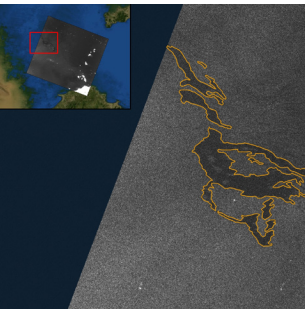
### MINE SURFACE ASSET MONITORING

Focuses on delivering information about the movement of key mining assets, focusing on pit walls, tailing dams, waste piles, surface assets and third party infrastructure.



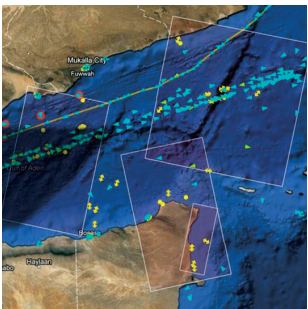
### FOREST ALERT SERVICE

SAR based change detection to monitor for evidence of plantation harvesting, selective logging, clear cutting, and natural forest degradation.



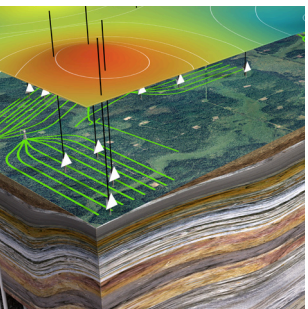
### OIL TRACKER SERVICE

Provides broad area offshore monitoring for situational awareness, giving operators insight into oil on water from all sources in all weather conditions.



### VESSEL DETECTION SERVICE

Provides near real-time information of vessels and “dark targets” to protect sovereignty, combat illegal fishing and smuggling, and support sustainable management of offshore resources.



### OIL & GAS INSAR MONITORING

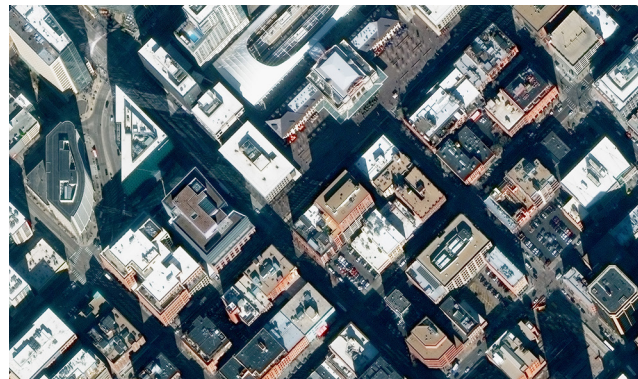
Detects millimetre-level changes in surface movement to support health, safety, and environmental monitoring.



# IMAGERY MOSAICS

The world the way you expect to see it

Maxar's imagery mosaics provide a stunning, virtually seamless, high-resolution image basemap over large areas. By stitching together our best imagery into a single layer, we provide an accurate, consistent, actionable satellite imagery layer to support mapping, visualization, and analytics at local, regional, and global scale.



## METRO

Coverage of 6,000 urban areas, with more than 3,000 in 30cm high resolution.



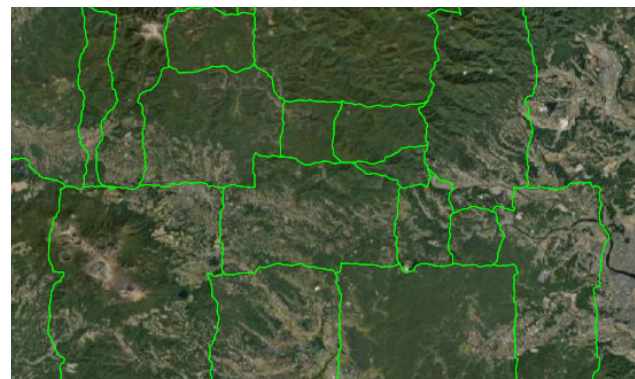
## NATURALVUE

Medium-resolution global image mosaic with integrated bathymetry layer.



## VIVID

High-resolution 50 cm country-wide mosaics, available globally.



## DYNAMIC

Mosaics configured to meet specific needs for any area of interest.

# ONLINE SUBSCRIPTION ACCESS

The insight you need, when you need it, anywhere in the world

For on-demand access and tailored geospatial solutions, Maxar offers a variety of subscription-based services that maximize the value of our imagery, information products, and analytics outputs for a diverse set of customer needs.

## Our flexible subscription options include:

- Cloud-based access to our global image archive, fresh collections, and select information products
- In-house tools to search, exploit, and share imagery
- Simplified integration for existing workflows



## SECUREWATCH

A SecureWatch subscription gives you instant access to the entire Maxar satellite image library and geospatial data.



# INFORMATION PRODUCTS

Geospatial data that goes beyond the pixel  
for advanced analytics and applications

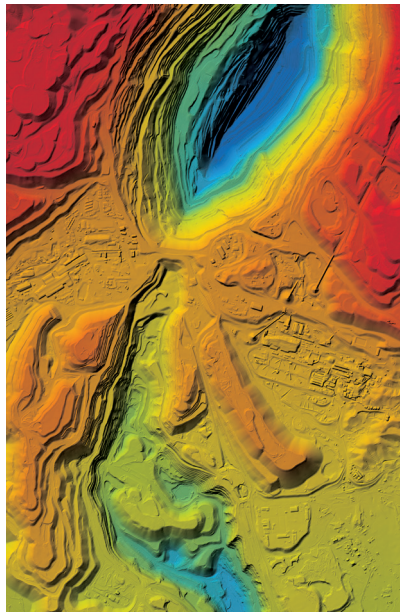
## ECOPIA BUILDING FOOTPRINTS POWERED BY MAXAR



### SKIP STRAIGHT TO ANALYSIS

By leveraging the most advanced high-resolution satellite imagery, artificial intelligence, and cloud-compute power available, we build and deliver precision footprint shapefiles at the scale your projects demand.

## ELEVATION SUITE



### SEE YOUR WORLD IN 3D

Access the dataset you need for real-world calculations. Our elevation models enable you to measure and analyze your project in 3D for a more complete picture of the situations that matter to your organization.

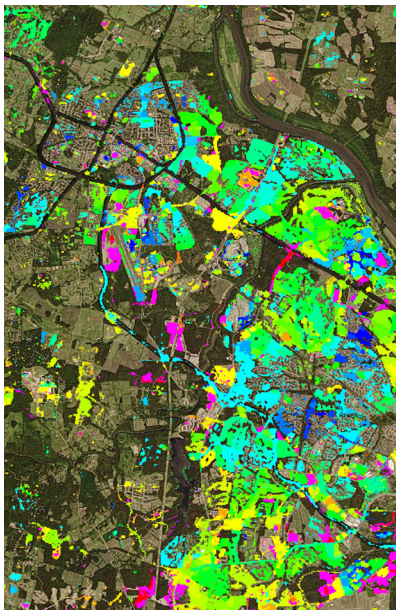
## CLUTTER DATA



### GET THE DETAILS

When line of sight matters, or vegetation encroachment puts wireless service at risk, Maxar clutter data delivers detailed classification of the built environment, foliage, and other surface features that may obstruct propagation with resolution options ranging from 50 cm to 10 m.

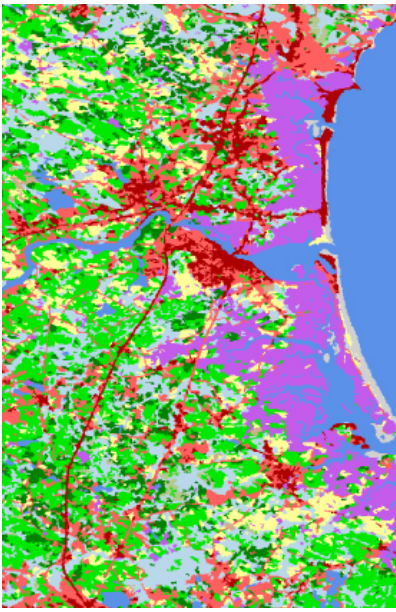
## PERSISTENT-CHANGE MONITORING (PCM)®



### ANALYZE CHANGE PATTERNS

Applying patented scale- and sensor-independent algorithms, PCM detects and isolates change indicators to hone in on activities of interest. Plus, gain access to thirty-four years of persistent change for insight on historical patterns of development as well as current changes in infrastructure.

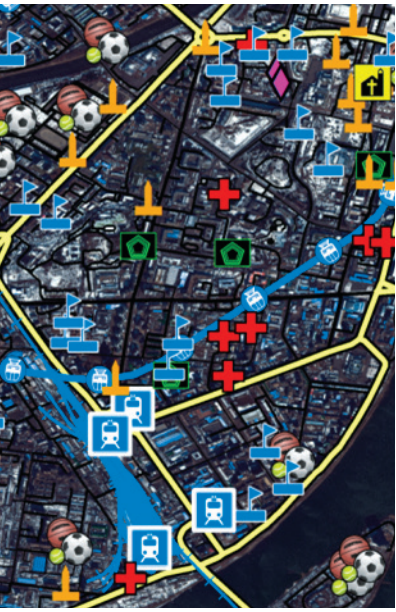
## BASEVUE



### BUILD YOUR FOUNDATION

Derived from Landsat and Sentinel-2 satellite imagery, BaseVue is the global standard in land classification for natural resource management, environmental impact monitoring, and more—delivering accuracy at scale.

## HUMAN LANDSCAPE



### GAIN CRITICAL CONTEXT

Utilizing key human geography features, these unique datasets reveal the human dynamics at play, enabling analysts to better understand and develop impactful responses that reduce operating costs and accelerate action—a valuable tool for any organization working in unfamiliar territories or conflict zones.



# ANALYTICS

Services and tools for analysts, developers,  
and data scientists

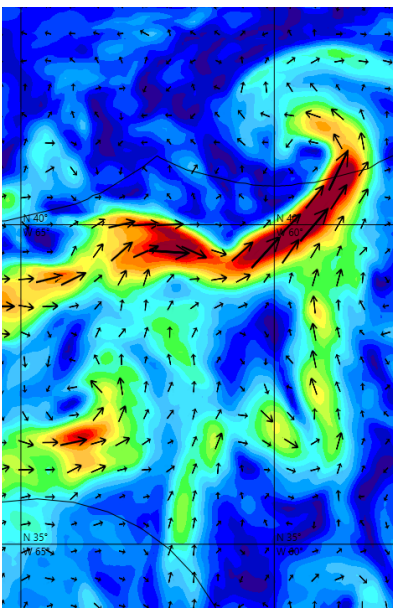
## GBDX



### TRANSFORM IMAGERY INTO ANSWERS

Our cloud-based, Geospatial Big Data platform allows you to build, access, and run advanced workflows to extract actionable information from our global image archive and proprietary machine learning algorithms.

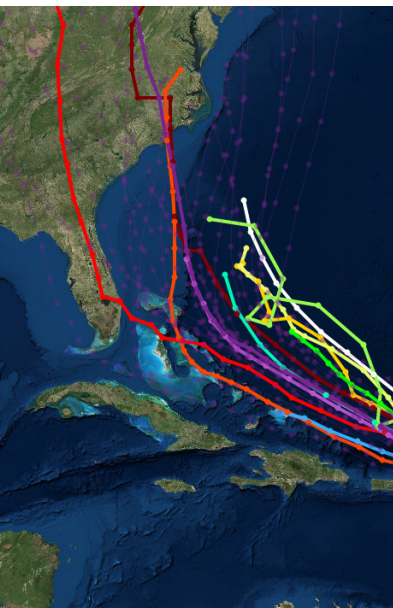
## SEASTAR INFORMATION SERVICE



### SEE BELOW THE SURFACE

Employ the advantages of data science and advanced geospatial technology to detect, track, and gain actionable insight into our oceans. Maxar's SeaStar Information Services remove the mysteries of marine life by delivering foundational and near real-time data to guide operations.

## WEATHERDESK



### MITIGATE EMERGING RISKS

Access real-time global weather forecasting to stay ahead of emerging conditions impacting production yields, financial trading, and critical infrastructure. Our WeatherDesk offers information products, web applications, and data services to serve diverse customer needs and workflows.

## ANALYTIC REPORTS



### STAY INFORMED

Maxar's in-depth, unclassified reports contextualize diverse environments and deliver unique insight on the world's most complex challenges. Each report leverages both proprietary and open-source information, including crowdsourcing, data enrichment, geospatial statistical modeling, on-the-ground polling, and academic research to provide a comprehensive analysis.

## GEOHIVE



### CROWDSOURCING

Our patented Geospatial Human Imagery Verification Effort (GeoHIVE) brings together geospatial analysts, geospatial developers and imagery analysts to interact with a vetted crowd of online users to validate, discover or annotate features of interest in satellite imagery.





# How will you leverage Maxar Earth Intelligence for a better world?

Explore impactful solutions  
and outcomes at [maxar.com](https://maxar.com)

# MAXAR